



# MONTHLY MEMBERSHIP PROGRESS REPORT

District 43 E

Results as of: 06/30/2018

GMT: STEVE ANTON

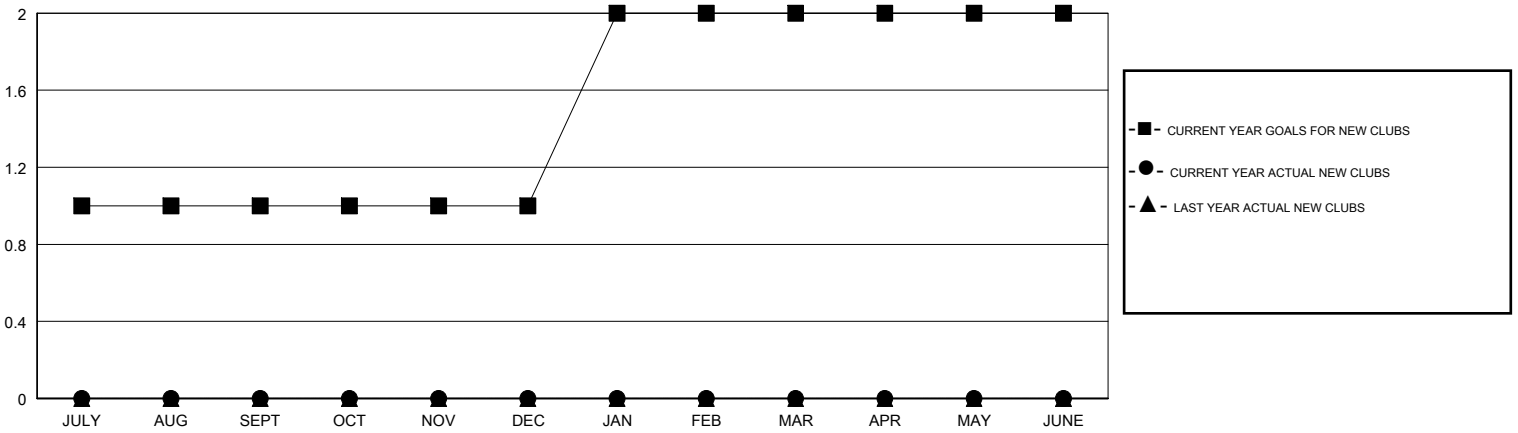
LOCATION KENTUCKY

GMT CA

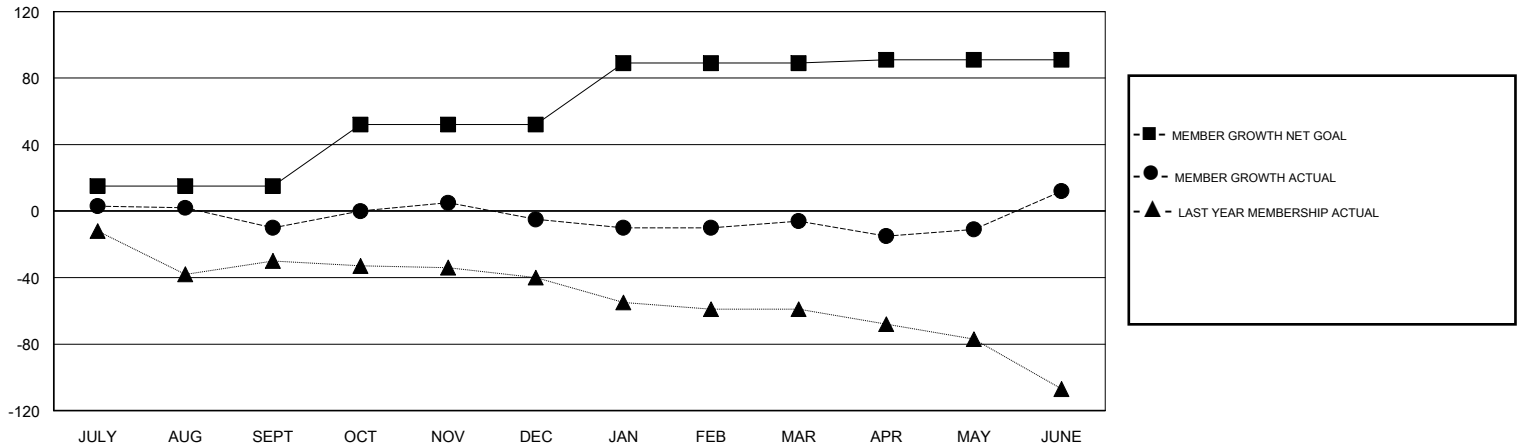
Clubs			
RESULTS FOR 2017-2018			
QUARTER	NEW CLUB GOAL	NEW CLUBS	DROPPED CLUBS
JULY/AUG/SEPT	1	0	2
OCT/NOV/DEC	0	0	1
JAN/FEB/MAR	1	0	0
APR/MAY/JUNE	0	0	0

Members			
RESULTS FOR 2017-2018			
QUARTER	MEMBER GROWTH NET GOAL	MEMBER GROWTH ACTUAL	DROPPED MEMBERS ACTUAL (including transfers)
JULY/AUG/SEPT	15	24	33
OCT/NOV/DEC	37	29	18
JAN/FEB/MAR	37	25	22
APR/MAY/JUNE	2	60	40

GOALS AND ACTUAL NEW CLUBS CUMULATIVE



GOALS AND ACTUAL MEMBERS CUMULATIVE



<b>DROPPED CLUBS: 3</b>
-------------------------

26 CLUBS OF 35 ADDED 1 OR MORE NEW MEMBERS

GENDER DISTRIBUTION	
MALE	644 (69.92%)
FEMALE	277 (30.08%)
Women Percentage Fiscal Year Goal: 3%	

DROPPED MEMBERS	
DECEASED	9
CLUB CANCELLED	0
OTHER	104
<b>TOTAL</b>	<b>113</b>

[CLICK HERE FOR CUMULATIVE MEMBERSHIP DATA](#)

TOTAL FAMILY UNIT MEMBERS	0
FAMILY MEMBERS PAYING HALF DUES	0